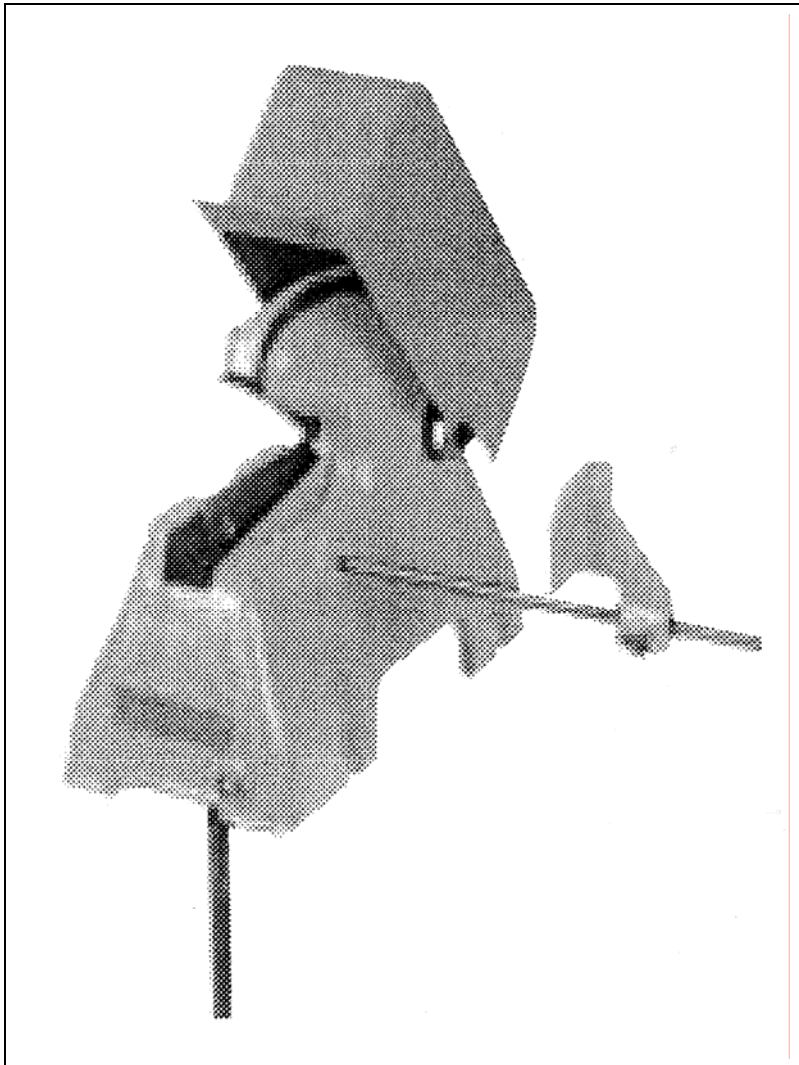


**ARTOS**  
ENGINEERING COMPANY

Machine Model	45-048 Manual Cable Cutter	Owners Manual		
PN	6-119880	Rev.	Date	12 SEPT 2006



Artos Engineering Company  
P.O. Box 1650  
Waukesha, WI 53187  
Phone 1 262 524 6600 Fax 1 262 524 0400  
[www.artosnet.com](http://www.artosnet.com)  
[service@artosnet.com](mailto:service@artosnet.com)

## Cable & Wire Cutter

### Use:

Intended for cutting all types of copper and aluminum wires and cables up to 5/8" diameter. There is an extra provision for handling diameters up to one inch; however, this is limited to bundles of very small wires, such as magnet wire or telephone cable. It is not intended for a one-inch diameter solid conductor cable, or even some of the heavier stranded types. Some of the stranded types with small wire stranding-can be handled in this diameter.

### Installation:

The Cable and Wire Cutter may be mounted on any bench or work table. Drill a hole 1-1/4" diameter, through the bench top, 1-1/4" behind the front edge of base casting. Then securely fasten the cutter to the bench with screws or bolts.

Assemble the foot pedal extension rod. This is made up of two parts jointed in the center by a turnbuckle. Screw one end of extension rod into coupling under base casting and fasten the other end to the foot pedal. The turnbuckle permits length adjustment of extension rod necessary for mounting foot pedal to floor or bench rail.

### Adjustment:

Set wire stop to length of wire to be cut. Lengths up to 16" may be measured with this stop.

### Operation:

The wire or cable should be inserted between the cutter blades from the left hand side. To cut wire, depress foot pedal.

### Maintenance:

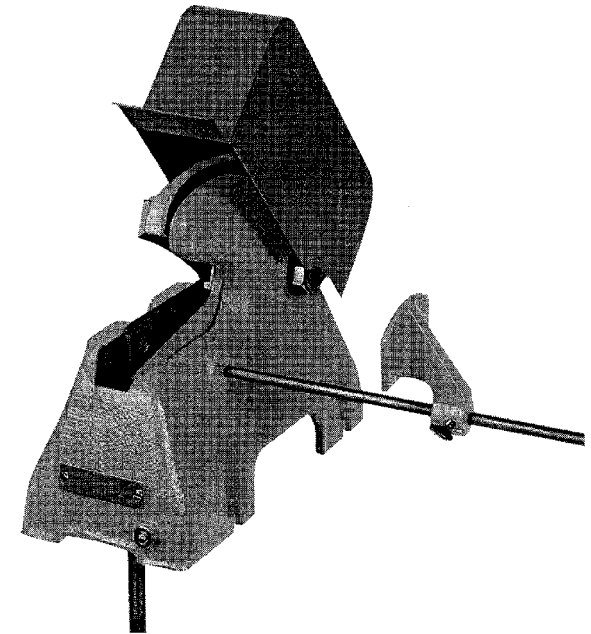
No maintenance is necessary, except for occasional oiling of moving parts. The lower blade, which is the straight edge type can be resharpened in the same manner as any other type of straight edge knife blade. The upper blade, which is curved, must be ground by hand. When ordering new blades, specify: "Set of Blades, L-6040."

### Important:

When replacing blades, lower blade should be shimmed so maximum clearance between blades = .001".

# 45-048 WIRE & CABLE CUTTER

Owners Manual #6-119880



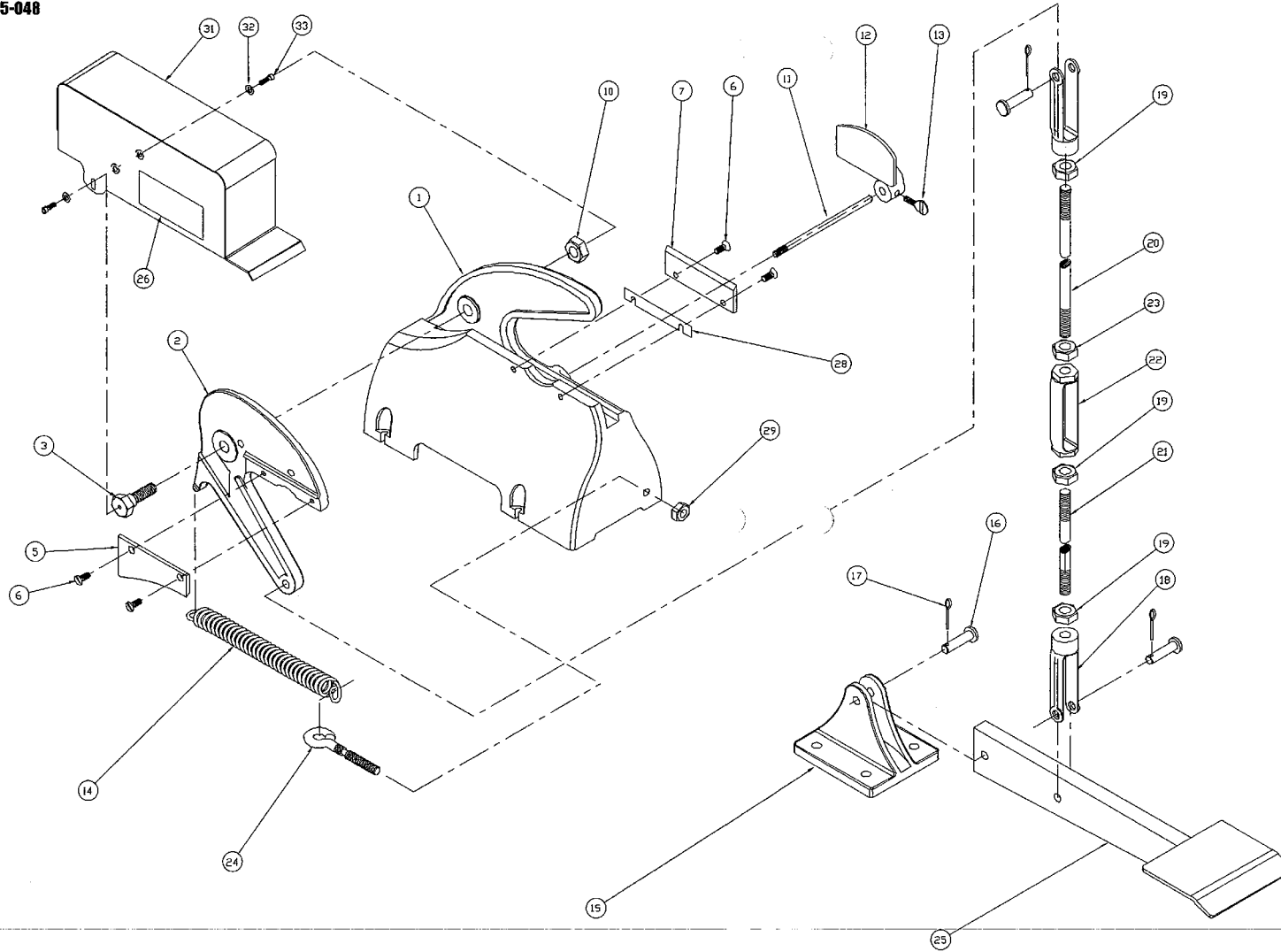
---

Artos Engineering Company  
P.O. Box 1650 Waukesha, WI 53187 U.S.A.  
Phone (262) 524-6600 Fax (262) 524-0400 www.artosnet.com

WORLD LEADER IN WIRE PROCESSING SYSTEMS  **ARTOS**  
ENGINEERING COMPANY

P.O. Box 1650, Waukesha, WI 53187 U.S.A., Telephone: 262-524-6600, Fax: 262-524-0400  
www.artosnet.com

MODEL 45-048



QTY.	PKT.	PART NO.	DESCRIPTION
1		H-4991	BASE WIRE & CABLE CUTTER
2		L-2166	AW
1		L-2141	JAW BOLT
		4	
1		L-6038	UPPER BLADE
4		351.032	FLHD. MACHSCREW 10-32X
1		L-6035	LOWER BLADE (CABLE CUTTER)
		8	
		9	
1		372.010	HEX JAW NUT 1/2-13
1		L-2139	STOP ROLL
1		L-3625	WIRE STOP
1		L-1941.032	THUMB SCREW
1		L-2140	EXTENSION SPRING
1		K-862	FOOT LEVER SUPPORT
3		P82.001	CLYVIS PIN 50X109
3		P83.001	KEY, CUTTER .09 X .075
2		1051.002	PTD. ADS. END JOKE
3		372.004	HEX JAW NUT 3/8-16
1		L-1257	UPPER ROD
1		L-2137	PULL ROD
1		1041.032	TURN BUCKLE
1		372.008	HEX JAW NUT 3/8-16
1		L-8689	EYE BOLT
1		L-1261	FOOT LEVER
1		140678	NAMEPLATE
		27	
		28	
1		900-851	SHIM (SEE BELOW)
		29	
		30	
1		L-2982	GUARD
2		L-9998	NYLON WASHER
2		L-113.010	SCREW, SHCS 8-32 X .50
		34	
		35	

SHIM AS REQUIRED

28	L-382	SHIM, BLADE (.001) IN.
28	L-383	SHIM, BLADE (.003) IN.
28	L-384	SHIM, BLADE (.005) IN.
28	L-385	SHIM, BLADE (.010) IN.

HEAT TREATMENT/SURFACE TREATMENT	MATERIAL DESCRIPTION	USED FOR	REV.
DISCREPANCY: No Material CHECKED DATE: 12/12/01 BY: H. KEENE	D	45-048	130
WIRE & CABLE CUTTER		12/12/01	A
WORK TO MEAN DIMENSIONS SEE MET. SCALE DRAWING	REVISED BY: H. KEENE	DATE: 05/26/2001	APP'D: H-5001